



Enriching, Encouraging, Empowering

## Message from the Principal

Yesterday we had a professional development day for several of our staff. The Math teams from both Elmgrove and East Taieri Schools meet together with Rob Proffitt White to work further on the Math Assessment tasks we are developing to identify and fill common misunderstandings in children's math practice across the school. We took our sample questions out to classrooms and tested them on the students. We are using their answers to refine the questions and mathematics problems to ensure they are clear to children and gather the information we require. We will continue with this work over the remainder of this term and will begin trialing the refined set of assessment tasks in full-class settings next term. We expect that these assessment activities will give us rich information and inform deliberate teaching around the most common math misunderstanding for children. This in turn should result in math programmes that are more targeted, more enjoyable and more effective. We are really fortunate to be part of this project and I look forward to sharing the results with parents in the future.

Bookings for parent / teacher interviews will open on Monday afternoon from 2 pm. I remind parents that they need access to the skool loop app to make bookings. I have included further information below on interviews. Please note in your diaries that classes finish early, 12.30pm on Tuesday 18<sup>th</sup> June as interviews start at 1pm on this day. Parents who would like their children to stay at school, on this afternoon and be supervised by the support staff will need to let their child's classroom teachers know. After-school care will not be operating on this day. The following days will operate as normal with school finishing at 3pm. After-school care will be held in the juniors while interviews are in the school hall.

I have had contact from some of the school neighbours about cars parking over driveways on the streets outside of school.

This is occurring predominantly at pick-up times. There have even been cases of cars with no one in them partially blocking driveways. I appreciate that this must be very frustrating for the homeowners involved. I ask that you ensure that you are parked legally and help us maintain good relationships with our neighbours.

Today we are having a Mufti day. All funds raised are going towards the court upgrades which are the major focus of the fundraising group this year. We appreciate your support and know children always enjoy these days.

Have a great weekend.

**Chris McKinlay**  
Principal

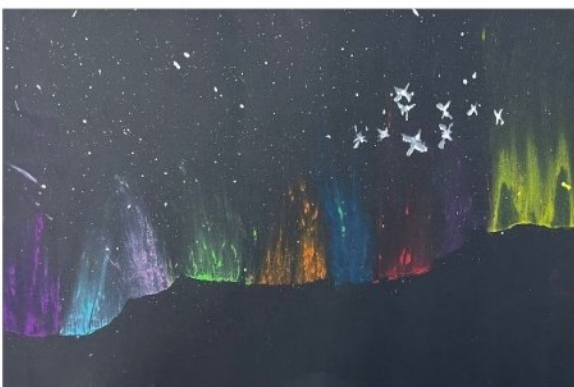


# MANUKA HUB

## MATARIKI ART

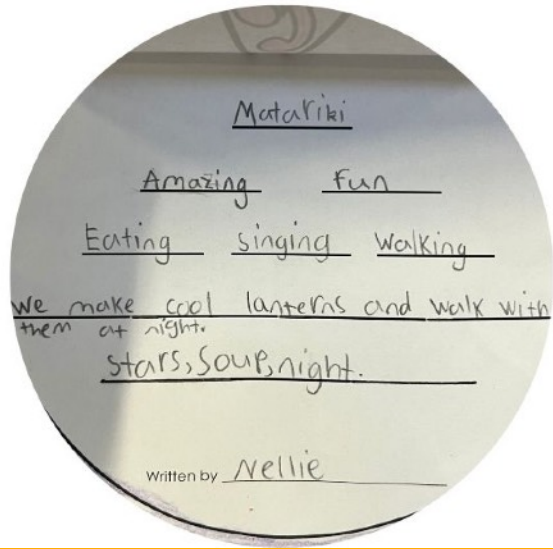
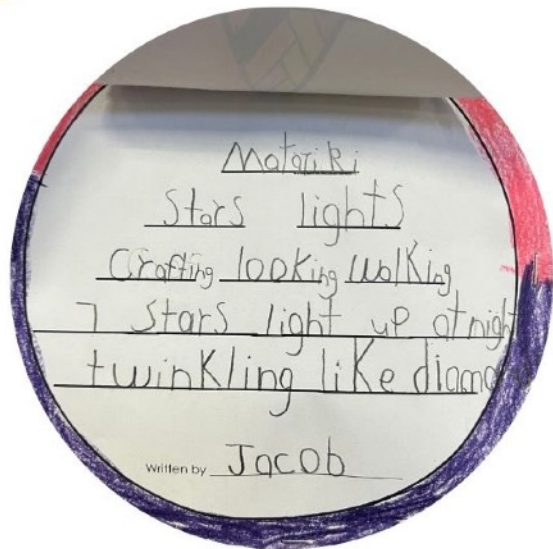


We have been busy creating some aurora inspired Matariki art. We cut out our mountain shape then flicked white paint to create the stars. Then we added colours to create an aurora. Finally we added in the stars of Matariki.



# Cinquain poems

Cinquain is a five-line poem describing a subject. We decided to use Matariki as our topic here are some of the amazing results!



# German Shepherds

*German shepherds are called German Shepherd's because they are from Germany. I can do more interesting facts so keep reading, there will be a photo at the end.*

*Some colours of German Shepherds are black, sable, black and tan, or black and gold. A german shepherd male's height can get to 60-65 cm, female 55-60 cm, male weight 30-40 kg.*

*What they need for their habitat is a yard or garden where they can patrol, sniff around, and engage in play. Their diets should include chicken, beef, turkey, lamb, salmon and rabbit.*

*So here are some facts about German Shepherds*  
*\*German Shepherds are one of the smartest dog breeds.*

*\*World war 1 made shepherds famous.*

*\*German shepherds are not dangerous.*

*\* German shepherds remain hugely popular in america.*

*German Shepherds are a nice looking dog. They are big so they need a big yard to play in. I would like to have one, they make great pets.*

*By Kieran*



# Alaskan Malamute



Did you know that the Alaskan malamutes served in world war II? They are very useful dogs. I am going to tell you more about them in this report.

A malamute is a large animal. Malamutes evolved from domesticated wolf-dogs. The Alaskan Malamute female weighs 32-38 kg and the male weighs 36-43 kg. They were originally bred for their strength and endurance because they can pull heavy freight.

Alaskan malamutes love the snow. Their natural habitat is colder regions like Antarctica and North America. Alaskan malamutes live to 12-15 years.

Malamutes are very useful. They are sled dogs that are used for personal travel. The ones that don't pull sleds or work do not need working dog food.

These are awesome pets, their fur looks really soft and cuddly. They do need a lot of exercise though. Don't you want one now after reading all of these facts?

By Henry

# Information Reports

During writing we have been researching an animal of our choice. We have written information reports with the interesting facts we discovered.

## *Tanuki*



What do you get when you cross half a raccoon and half a dog? A tanuki.

Tanuki are not raccoons or dogs, they are a different type of species that you find in Japan. They have brown and black fur. They live for 7- 8 years in the wild.

Tanuki eat insects, berries, birds , and fish. Tanuki are prey to home dogs.

They sleep in old and abandoned badger and fox burrows. Parents look after their pups at a den for around a month.

Tanuki are fluffy and I would recommend them as a pet. No one else would have one.

By Isla

## *Dolphins*



*Why do dolphins spin in the air? Because that 's how they talk. I like dolphins and I am going to tell you about what I have learned about them.*

### *Habitat*

*Dolphins live in warm waters and live in bays. They breath through their tube holes.*

### *Diet*

*Tiger sharks are their predators do dolphins swim away from them. They like to eat fish and squids.*

*There are lots of interesting facts about dolphins. There are 38 species of dolphins in the water. Dolphins have sounds like whistles, clik, and burst-pulses.*

*I hope you had fun reading.*

*By Ishe*

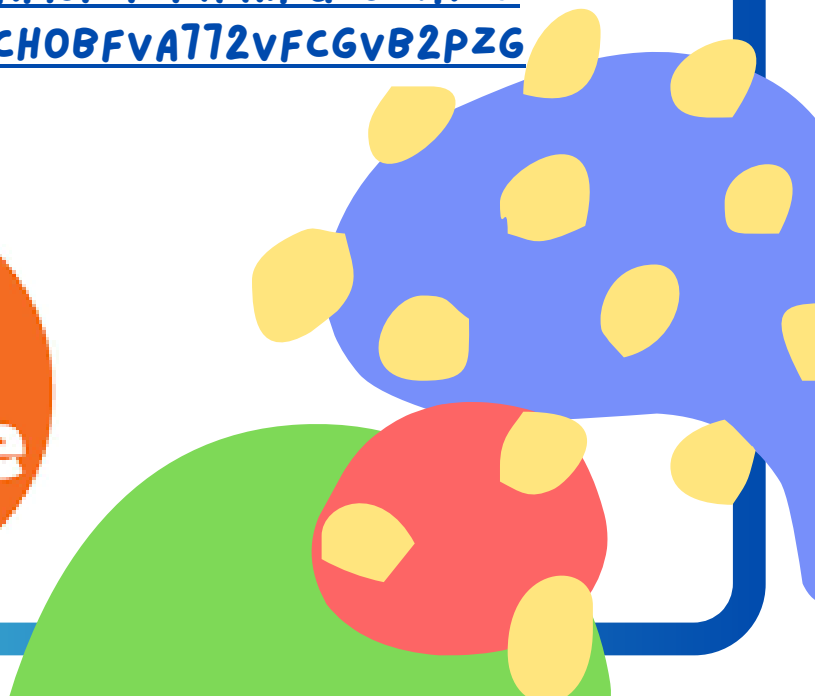
**T-SHIRTS FOR SALE!**  
**\$10 EACH**



**FOLLOW THIS LINK TO BUY YOUR T-SHIRT!**

**[HTTPS://DOCS.GOOGLE.COM/FORMS/D/E/1FAIPQLSC7RO0FX0ZR7SXOPQKXL69PWK\\_5FJCHOBFA772VFCGVB2PZG/VIEWFORM](https://docs.google.com/forms/d/e/1FAIPQLSC7RO0FX0ZR7SXOPQKXL69PWK_5FJCHOBFA772VFCGVB2PZG/viewform)**

**4** World Vision  
**Hour  
Challenge**



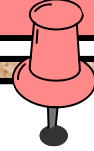


# Rippa League Tournament



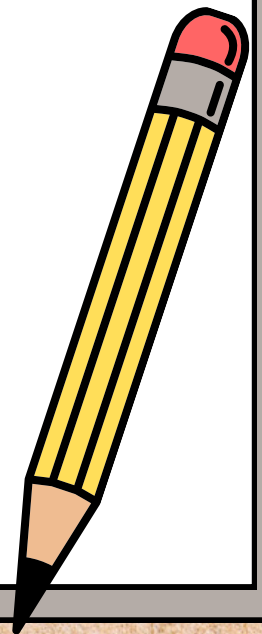


# Important DATES



## Term 2

- **Week 6- 3rd June - 9th June**
  - 3rd June Kings Birthday - No School
  - 4th June Art Gallery Visit - Kauri Hub
  - 7th June Mufti Day
  - 7th June Assembly Hosted by Rimu
- **Week 7- 10th June - 16th June**
  - 14th June Assembly Hosted by Totara
- **Week 8- 17th June - 23rd June**
  - 18-20th June Parent Teacher Interviews
  - 21st June Assembly Hosted by Moa Team
- **Week 9- 24th June - 30th June**
  - 26th June Matariki Evening/Lantern Night
  - 25th June BOT Meeting
  - 28th June Matariki - No School
- **Week 10- 1st July - 7th July**
  - 5th July No Assembly
  - 5th July Last day of school for Term 2







## Join Us in Making Pumpkin Soup for Matariki Night!

As we prepare for our upcoming Matariki Night, we need your help! We are looking for volunteers to help make pumpkin soup. No experience necessary—if you can stir, you're perfect for the job!

## PARENT / TEACHERS INTERVIEWS

Parent / teacher interviews are set for Tuesday 18th to Thursday 20th June. These Interviews will be held over three days in the school hall. Both teachers from your child's hub will be present for interviews. You are welcome to bring your child to interviews if you wish. There will be a waiting area set up in the school library for families prior and during interviews. Reports are scheduled to be sent home on Friday 14th June. Reports are sent out digitally via email. If you do not receive your child's report, please check your spam folder before contacting the office. You will need to ensure the school has the correct email address for all whanau that should be receiving a copy of the report.

Because of the amount of time needed to complete interviews we will be starting interviews at 1pm on Tuesday 18th June. Normal classes will stop just before lunch on this day. We invite parents to collect children from school from 12.30pm on the Tuesday. Any children who are still at school once interviews start at 1pm will be supervised in a classroom by our teacher aides until they are picked up. Please let your child's teacher know if your children will be staying at school and for how long.

Interview bookings will open at 2.00pm on Monday 10 June. Interview bookings are made via the skool loop app. If you do not have this app you will need to download it. If you are having difficulties making bookings, please contact the school office for assistance

Interview bookings will close at lunch time Monday 17th June. Time slots will fill up quickly so make sure you get in promptly to secure a time that works for you.

